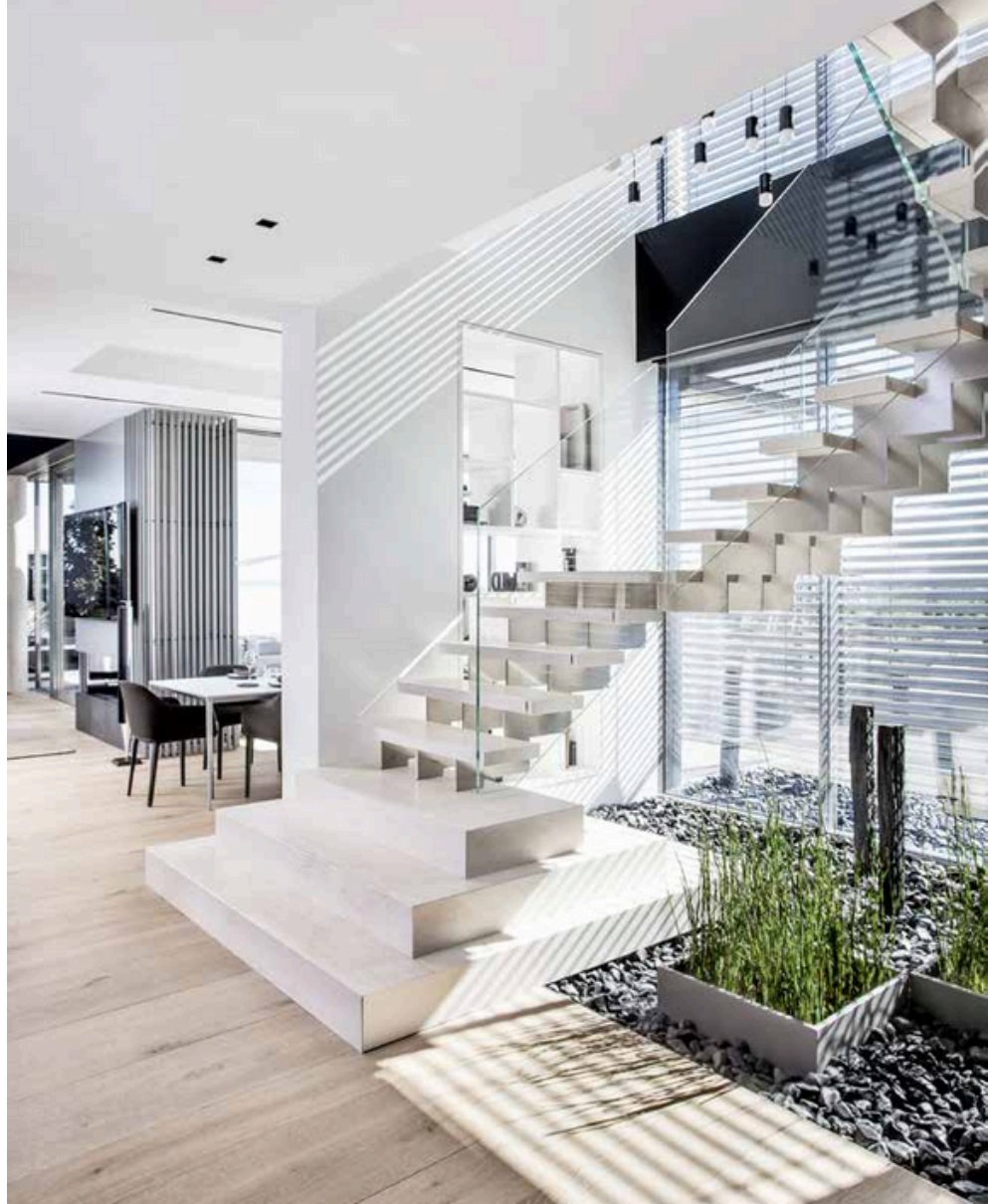


interbau
ARCHI
STAIRS
DUBAI

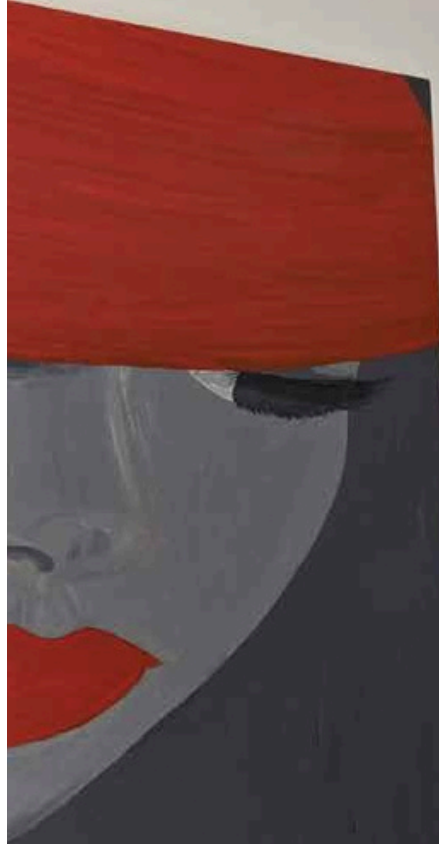
HIGH
EXPRESSION
OF STYLE

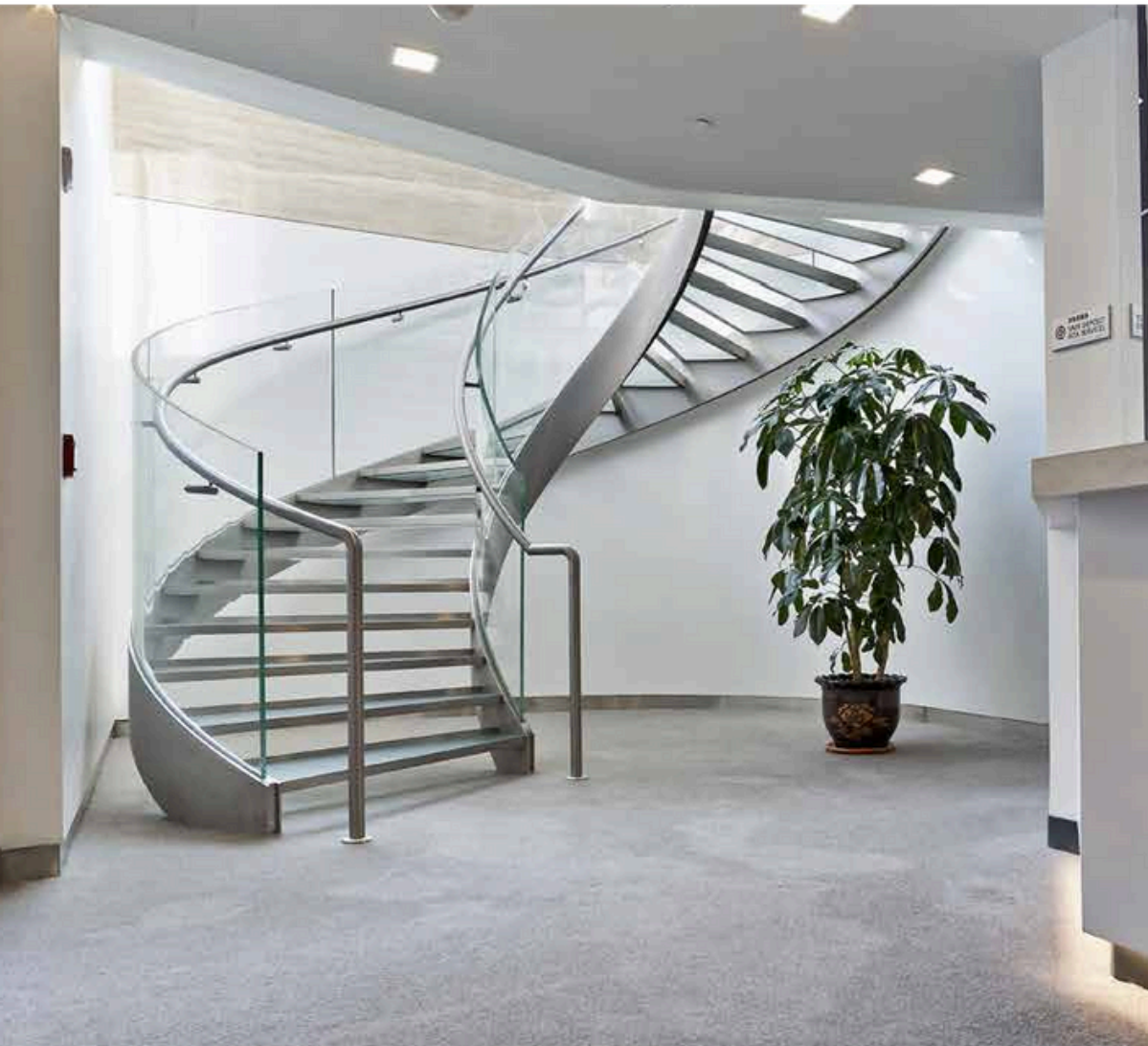
LA PERFETTA ARMONIA FRA DESIGN E FUNZIONE

2





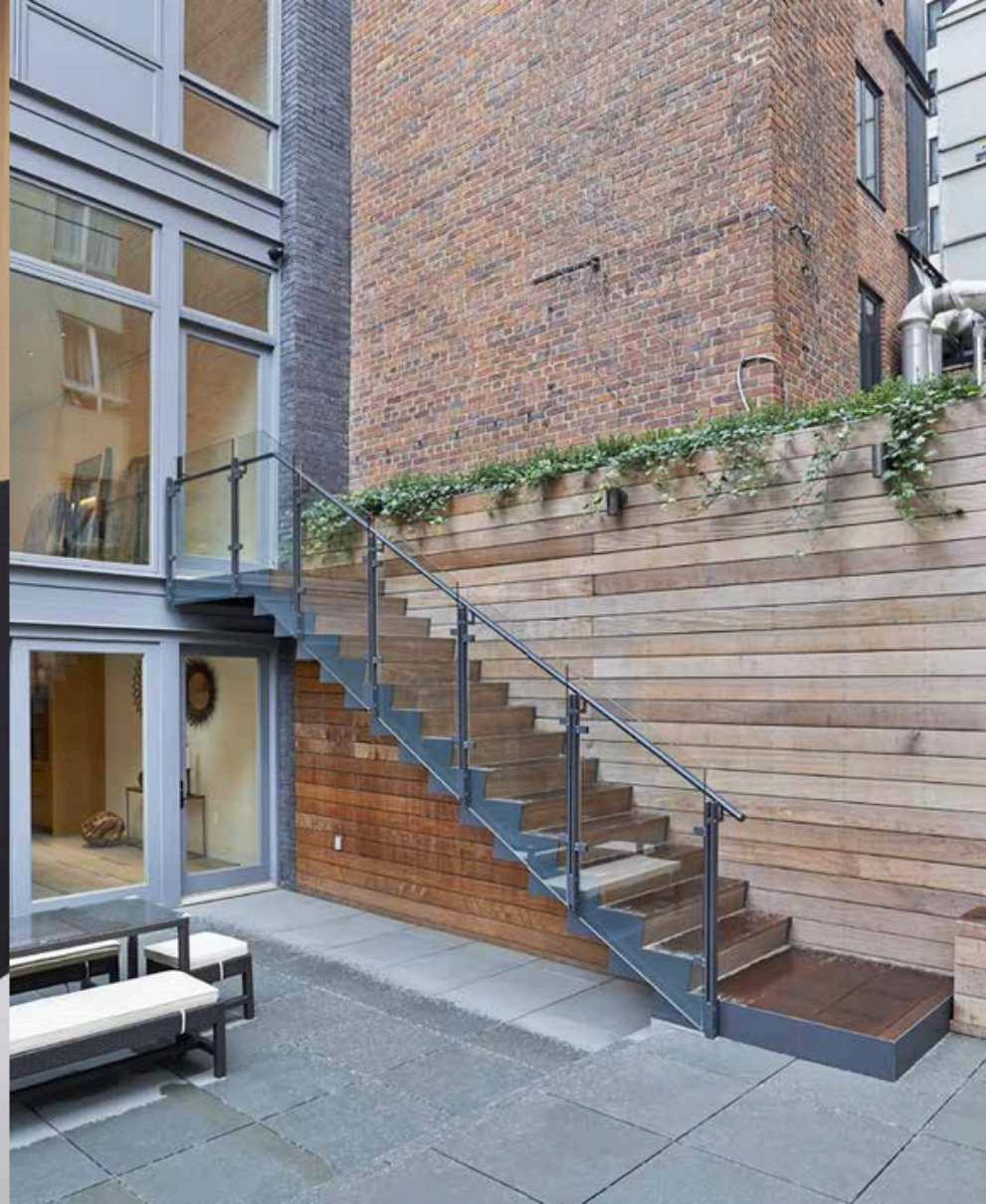


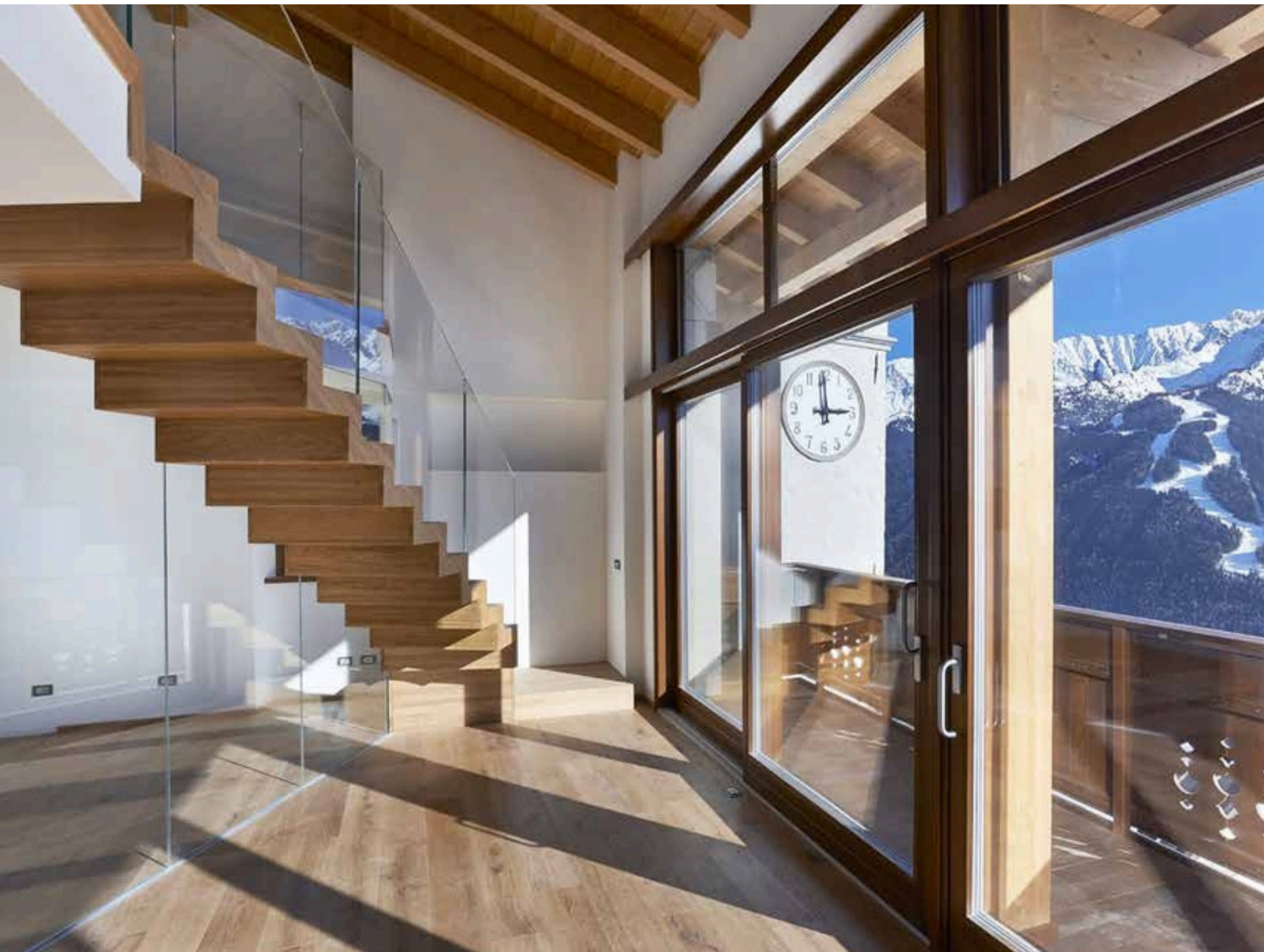






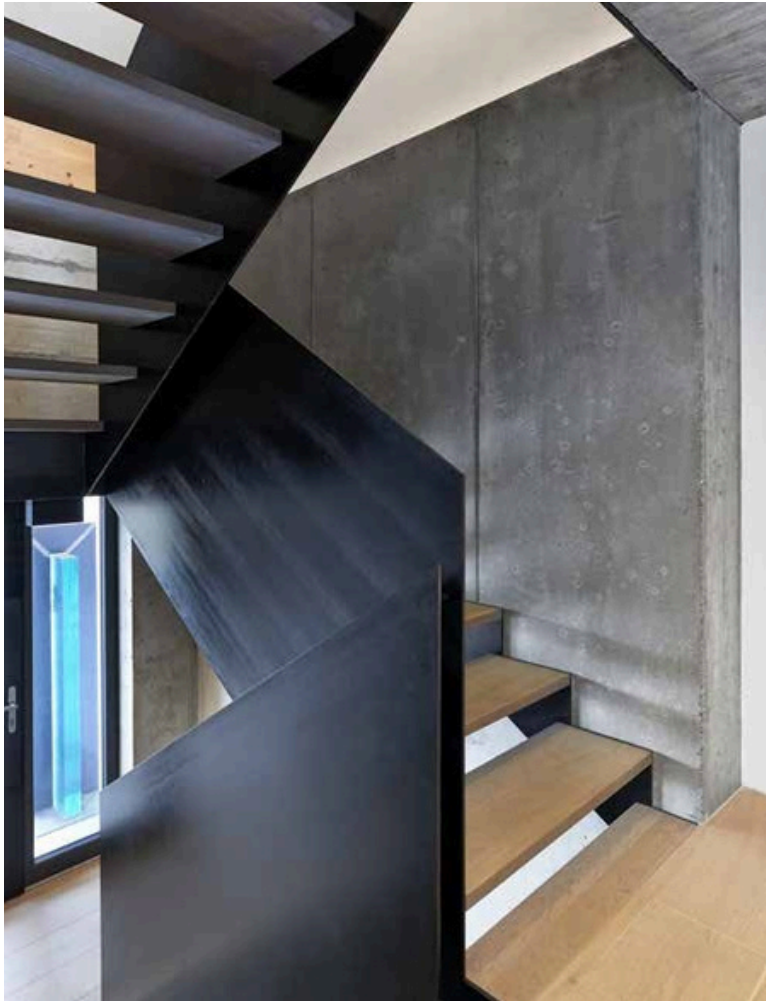






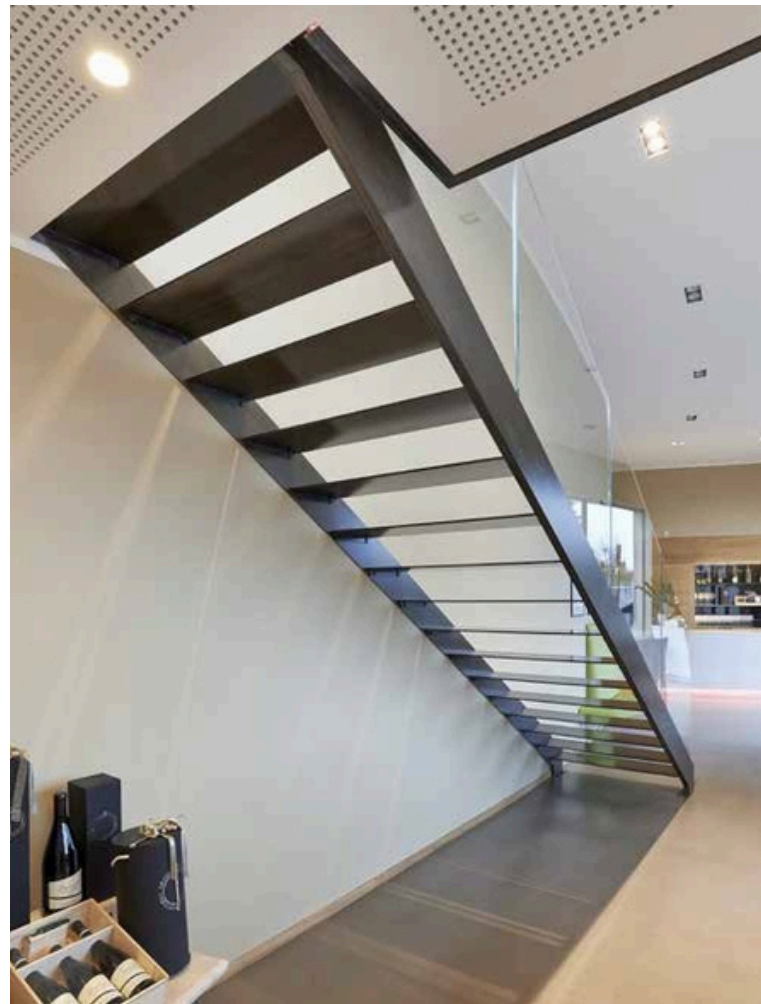
*-SUSPEN
-DED IN
-NATURE*

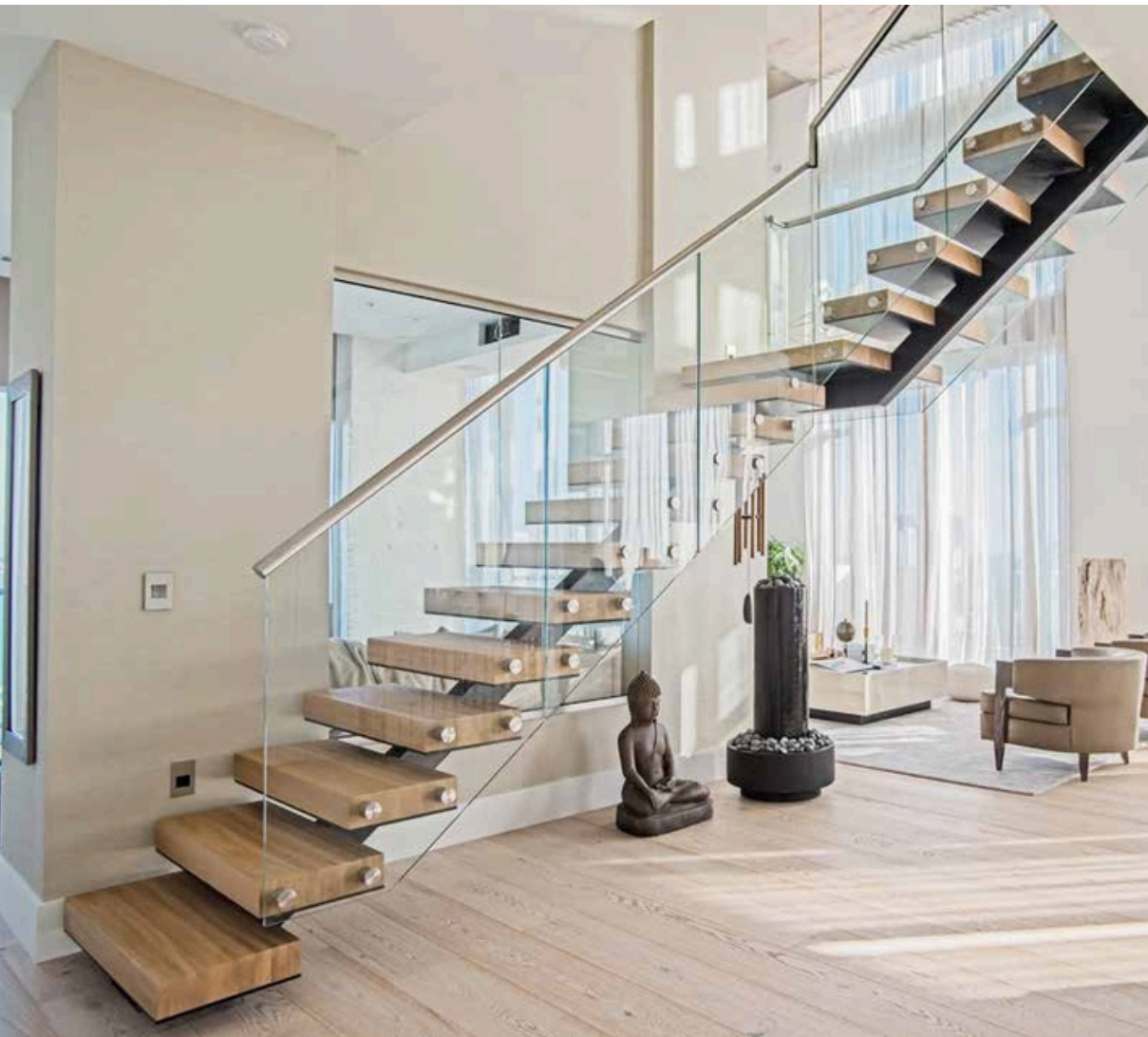
The mountain landscape enters through the large windows: the scale does not compromise its continuity. The concept of the architect Lucio Beltracchi is of a staircase characterized by rational lines, softened by the wooden finish, suspended to connect the living and sleeping areas. Further function of the staircase: visually separate, within the open space, the living area from the kitchen.

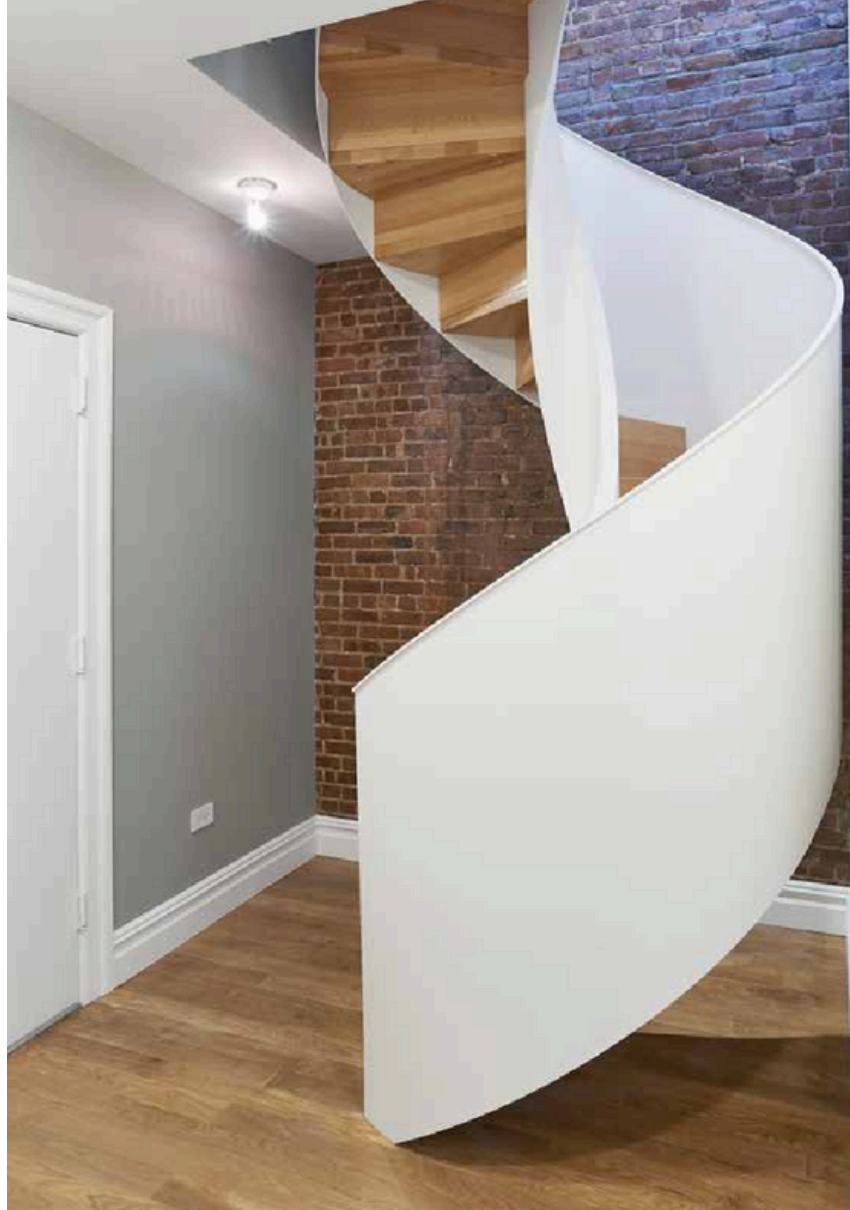


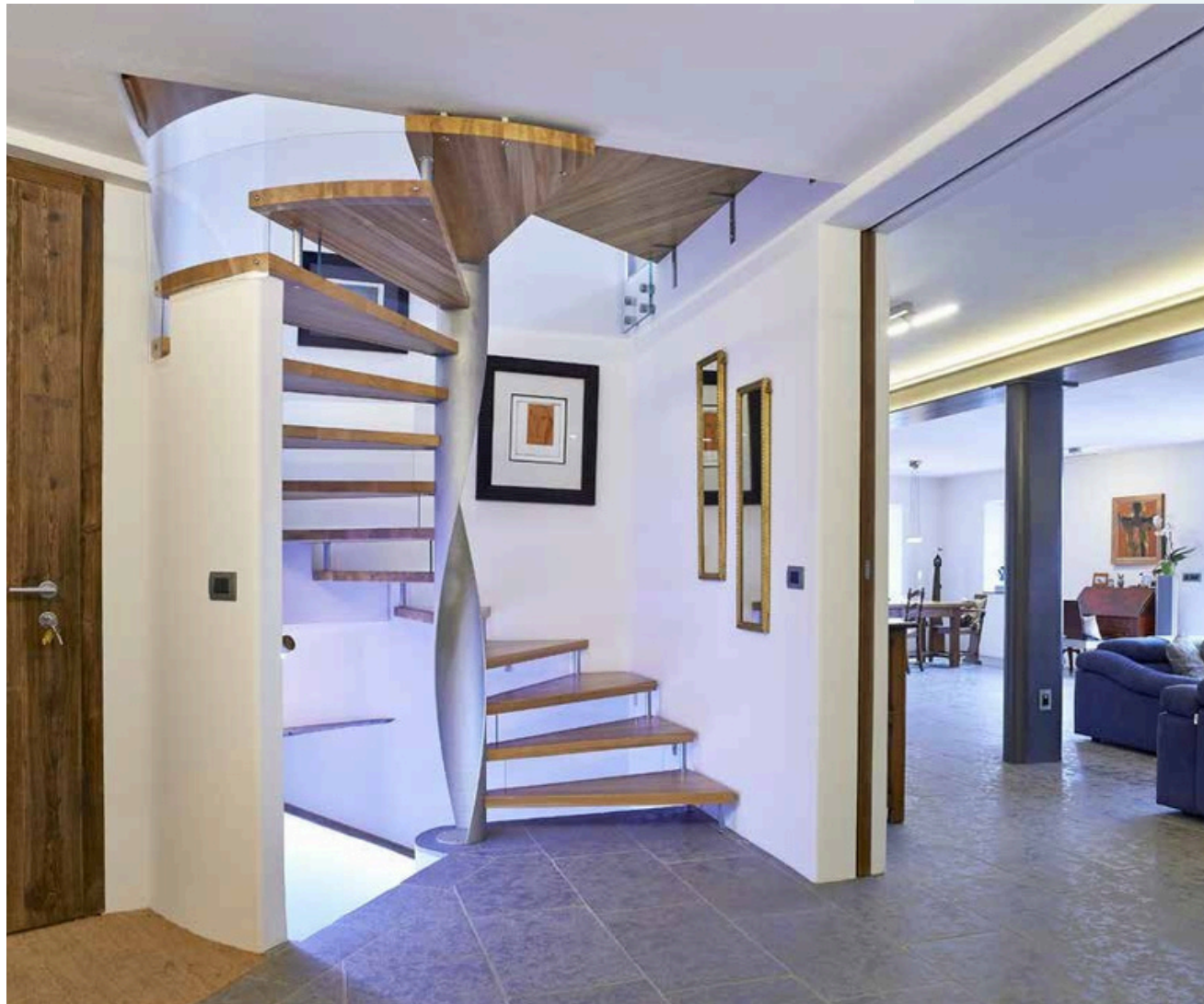
20—21











In the helical staircase,
severe geometries unfold
around the iron blade. Each step,
in solid oak, is custom made.

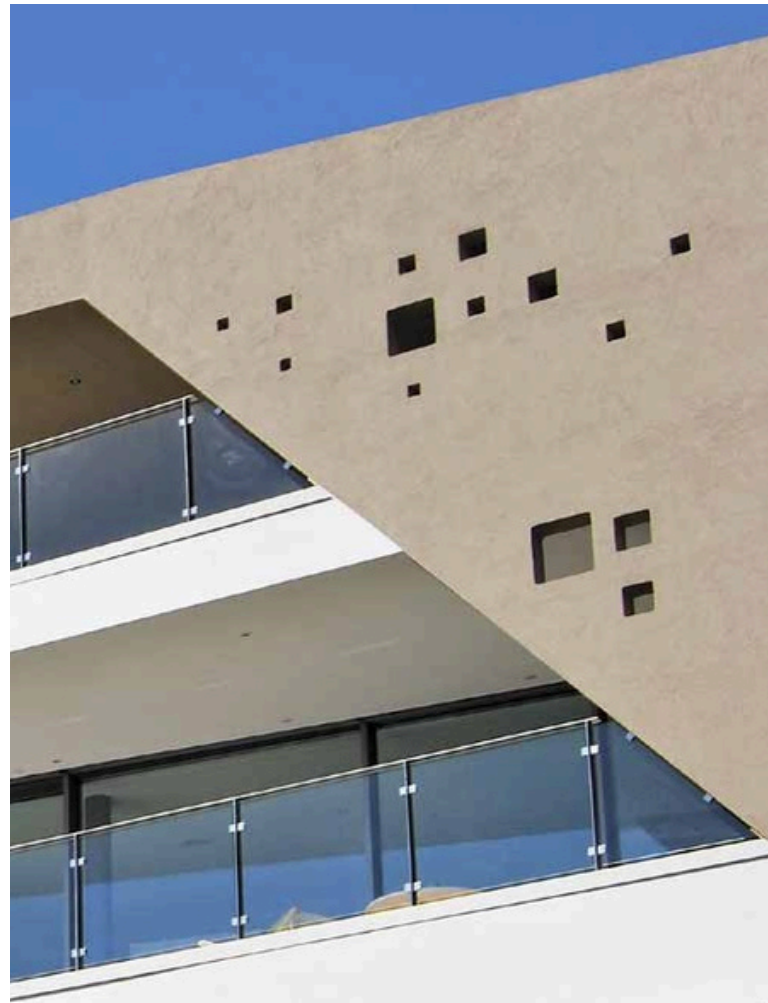
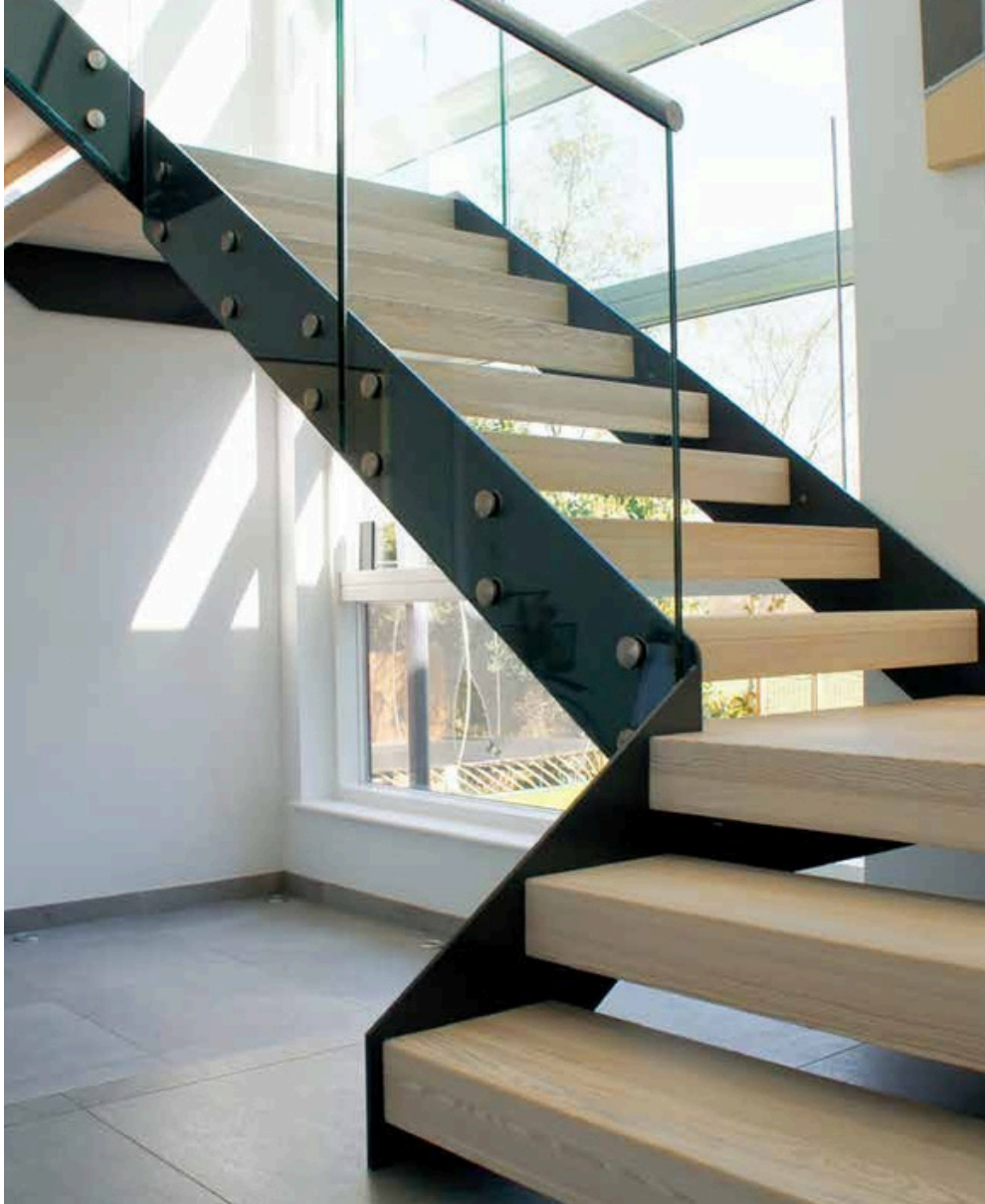


*ALPINE WOOD
— TRUE —
PROTAGONIST*

In a South Tyrolean farmhouse from the 19th century, completely renovated by the architect Malcolm Ness for clients of Irish origin, the cosmopolitan touch cannot help but be evident: yet wood, the protagonist material of the typical furnishings of these areas, dominates the environment. Interbau created, based on the architect's design, two staircases: one connecting the ground floor with the first, the other leading from a private living room to an overlying gallery—used as a library.

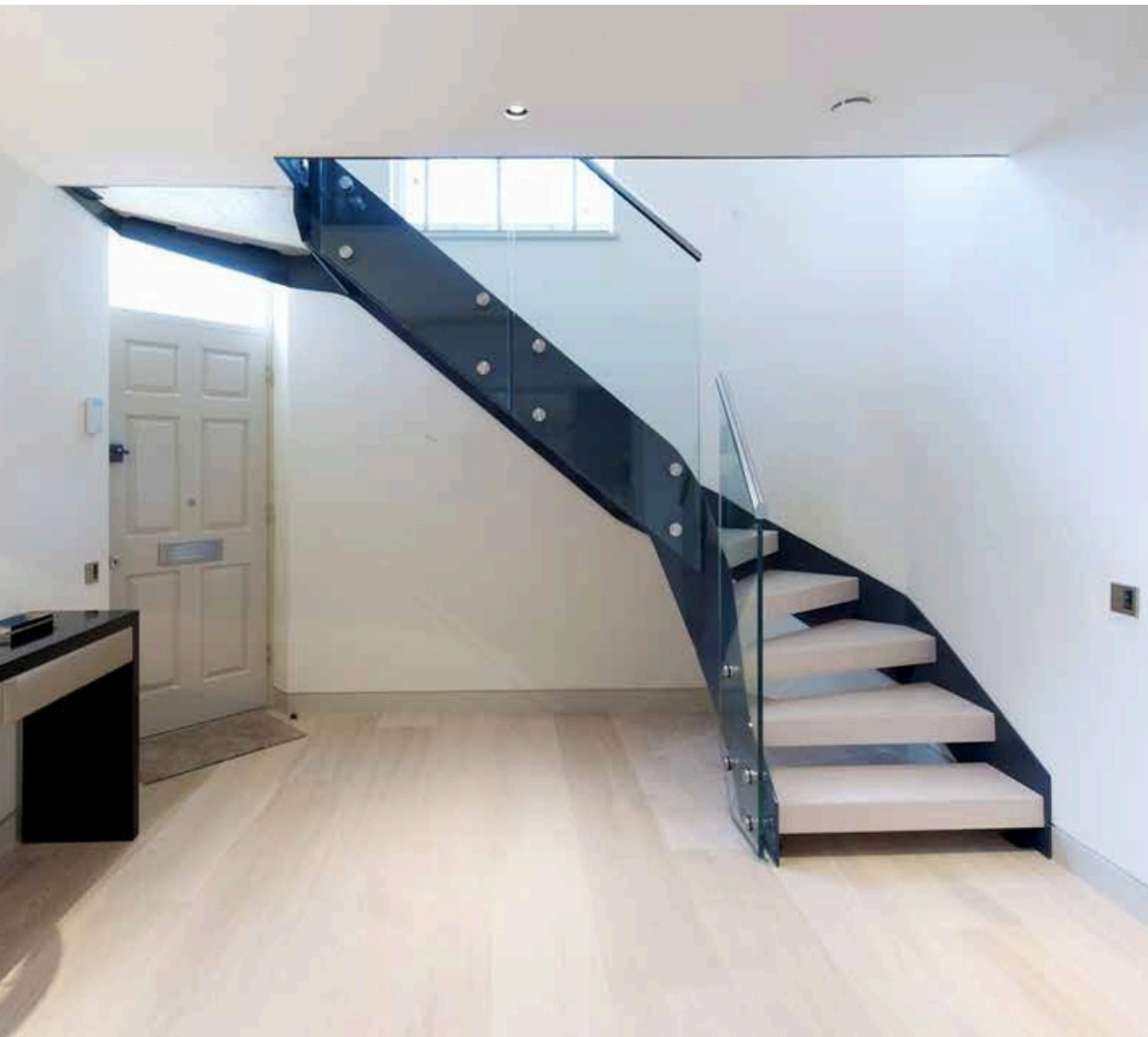


31

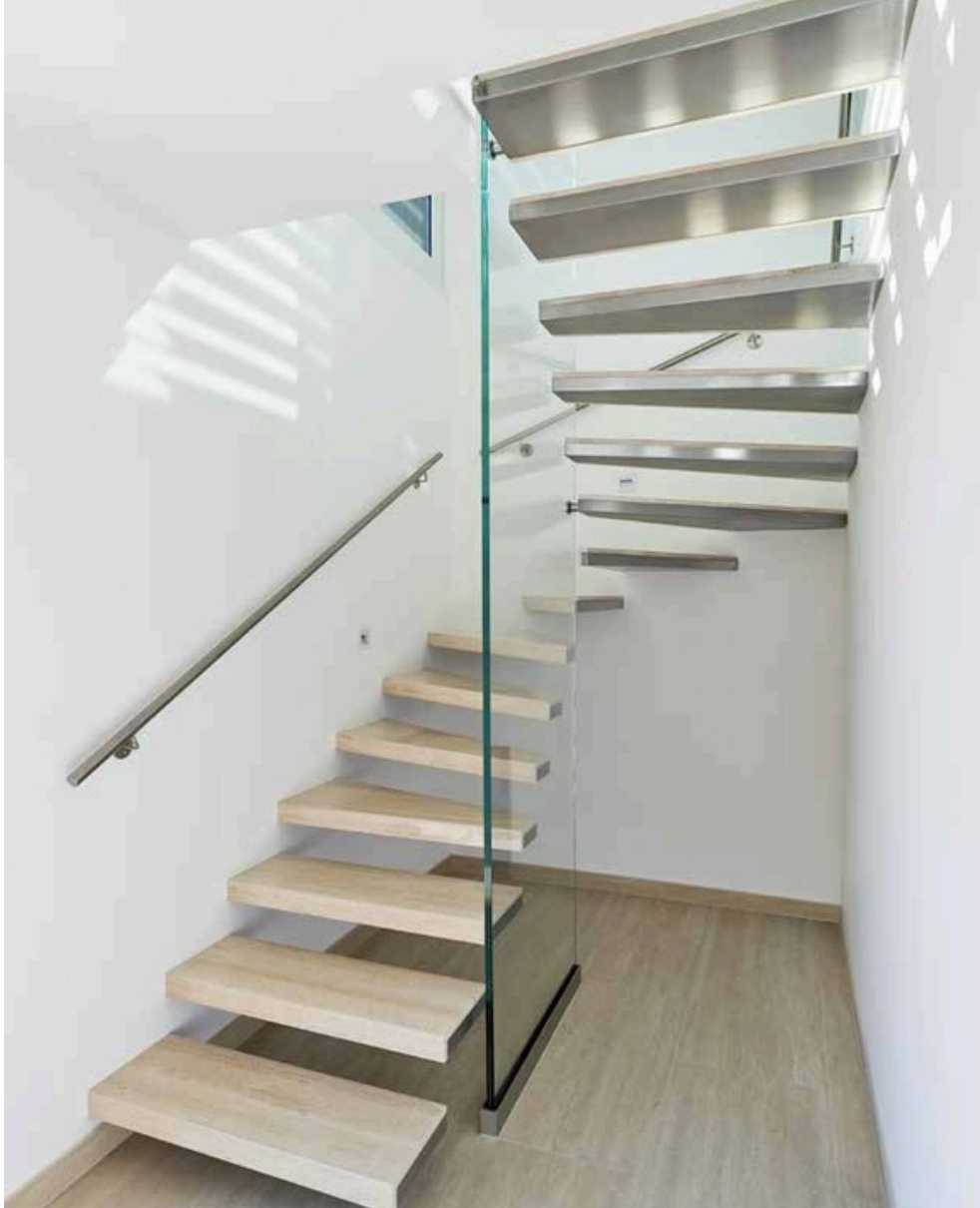


VILLA PRIVATA — LUSONI, BOLZANO / ITALIA

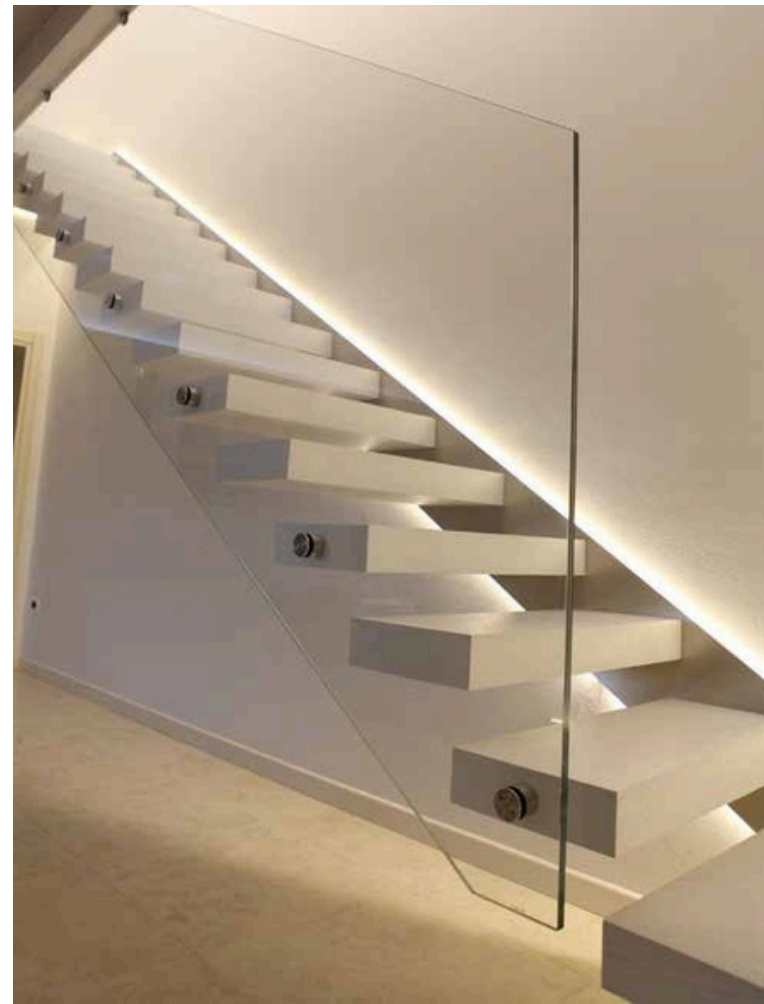
32



35



36









43

35 Spiral staircase characterized by stainless steel column and railing. Essential and binding, the parapet made of 6 rods is also repeated overlooking the living room.



44